



**Electric**



**Petrol**



**Pneumatic**

*Trelawny floor planers are repeatedly chosen for being tough machines to tackle the most demanding applications of surface preparation and material removal.*

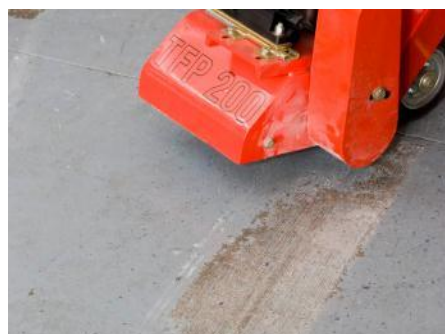
Ideal for the **removal of rust, scale, paint, adhesives** and other deposits from steel and concrete surfaces in preparation for re-coating. They produce an ideal key or grooved profile on concrete for waterproofing and non-slip surface applications.

## **FEATURES**

- **Built in hold to run safety device**
- **Vacuum adaptor fitted as standard**
- **Fully adjustable handle-bar:** provides greater operator comfort
- **Choice of power source:** electric, petrol and air models available
- **Accurate depth control:** improves overall performance & extends cutter assembly life



**Coating & corrosion removal**



**Roughing concrete**

## Accessory guide vs. applications

Various types of cutters are available to suit all the different kinds of applications

|   |  |
|---|--|
|  | <b>Tungsten Carbide Tipped Cutter –</b><br>for all concrete texturing, scabbling, planing and grooving applications  |
|  | <b>Star Cutters –</b><br>for the removal of paint coatings and laitance. Deck descaling                              |
|  | <b>Beam Cutters –</b><br>for the removal of paint, coatings and laitance, grease, dirt and ice deposits              |
|  | <b>Milling Cutter –</b><br>for the removal of thermoplastic road and runway markings, bituminous and rubber deposits |
|  | <b>Wire Brush –</b><br>for general workshop cleaning and removal of light surface rust                               |

see separate accessory sheet for cutter & drum options

## TECHNICAL DATA

| Part No.  | Petrol machine     |              | Electric machines |               |              | Pneumatic machine |
|---|--------------------|--------------|-------------------|---------------|--------------|-------------------|
|   | 320.2000T          | 320.2002T    | 320.2004T         | 320.2006T     | 320.2016T    | 320.2012T         |
| <b>Specifications</b>                                   |                    |              |                   |               |              |                   |
| Working width   | 195mm              | 195mm        | 195mm             | 195mm         | 195mm        | 195mm             |
| Output power  | 5.5 Hp             | 3 Hp         | 3 Hp              | 3 Hp          | 3 Hp         | 3.5 Hp            |
| Cutter speed  | 1833               | 1650         | 1650              | 1650          | 1650         | 1528              |
| Max. cutting depth                                      | 3mm                | 3mm          | 3mm               | 3mm           | 3mm          | 3mm               |
| <b>Supply requirements</b>                              |                    |              |                   |               |              |                   |
| Voltage   | -                  | 110 V        | 220 V             | 380/440 V     | 110 V        | -                 |
| Phase   | -                  | Single       | Single            | Three         | Single       | -                 |
| Cycle   | -                  | 50Hz         | 50 / 60 Hz        | 50 / 60 Hz    | 60 Hz        | -                 |
| Plug size   | -                  | 32 Amp 3 pin | 16 Amp 3 pin      | 16 Amp 5 pin  | 32 Amp 3 pin | -                 |
| Transformer   | -                  | 3Kva *       | -                 | -             | 3Kva *       | -                 |
| Cable size (mm)   | -                  | 2.5 – 4 core | Min. 2.5 core     | Min. 2.5 core | 2.5 – 4 core | -                 |
| Cable length  | -                  | 15 to 30m    | 30m               | 30m           | 15 to 30m    | -                 |
| Engine type   | Honda GX160 petrol | -            | -                 | -             | -            | -                 |
| Air Consumption (litres / second – cubic feet / minute) | -                  | -            | -                 | -             | -            | 78 lps (165cfm)   |
| <b>Dimensions</b>                                       |                    |              |                   |               |              |                   |
| Length  | 900mm              | 900mm        | 900mm             | 900mm         | 900mm        | 900mm             |
| Width   | 350mm              | 350mm        | 350mm             | 350mm         | 350mm        | 350mm             |
| Height  | 900mm              | 900mm        | 900mm             | 900mm         | 900mm        | 900mm             |
| Weight  | 59kg               | 68kg         | 68kg              | 68kg          | 68kg         | 45kg              |
| Vacuum take off diam.                                   | 50mm               | 50mm         | 50mm              | 50mm          | 50mm         | 50mm              |

\* Trelawny recommends the use of a minimum 5 Kva continuous rated centre tap transformer with their 110 volt machines.

- All part number specified above are for machines complete with 5 point tungsten carbide tipped cutters. For machines requiring alternative cutting media please specify.
- Vibration levels vary depending on model

**Tel : +44 (0) 1926 883781**  
**Fax : +44 (0) 1926 450352**  
**Email : sales@trelawny.co.uk**  
**Web : www.trelawnyspt.co.uk**